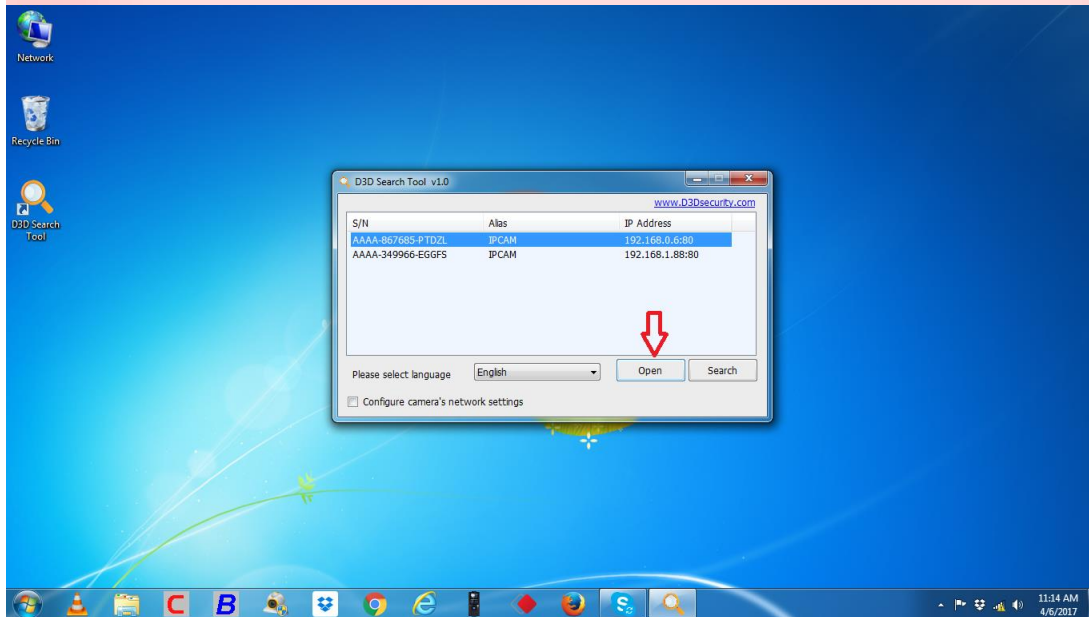


How to Change Time settings in IP camera (Models:D8810, D8801, and D8862)

- Download & Open '**D3D Search Tool**'. Select Camera and click on 'Open'
- To download D3D Search Tool, Go to website(www.d3dsecurity.com). Go to '**Support**' Tab and select IP camera page. Select the D3D Search tool for required model

Open D3D Search Tool:



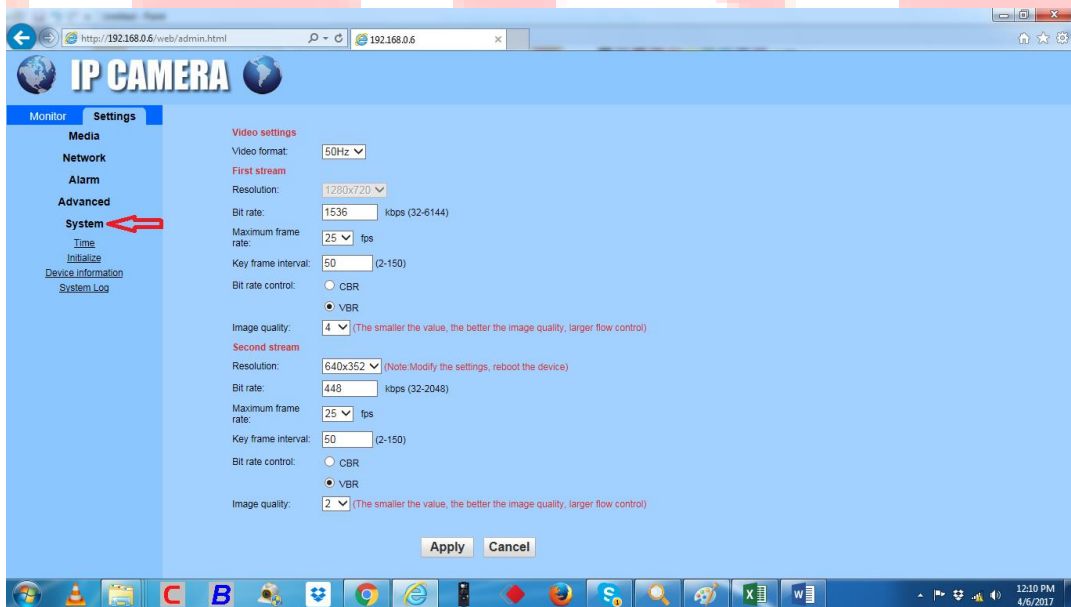
- Type 'User name' and 'Password' after that click on 'OK'



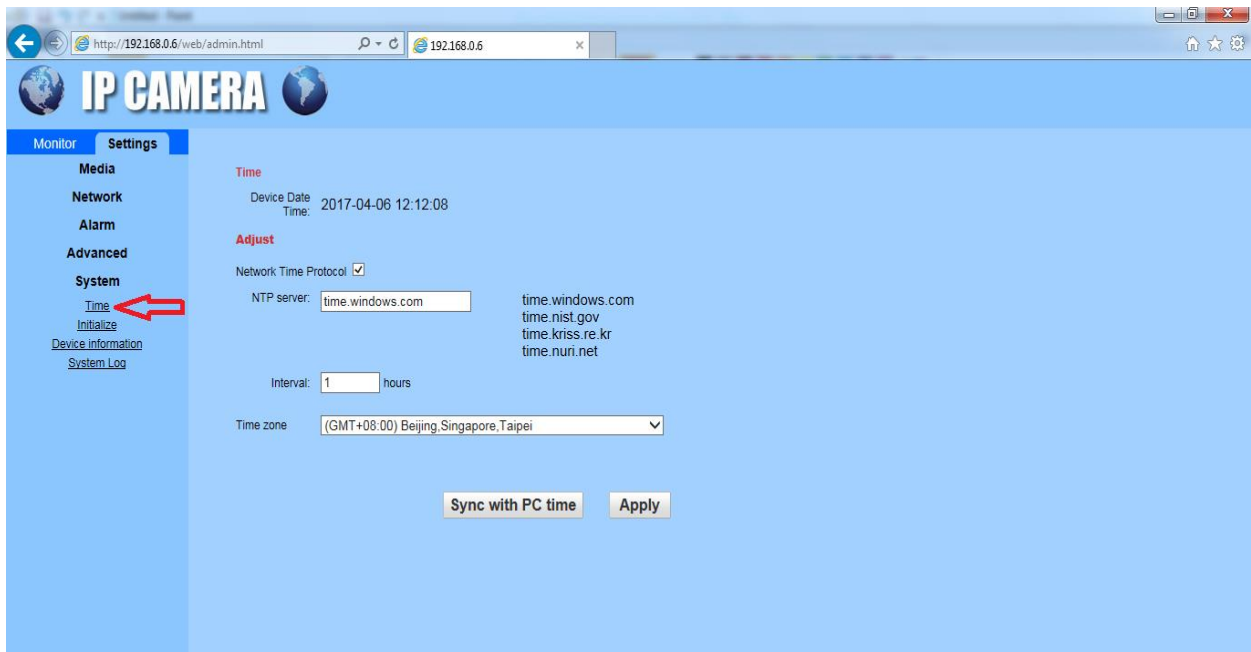
- Click on 'Setting' icon



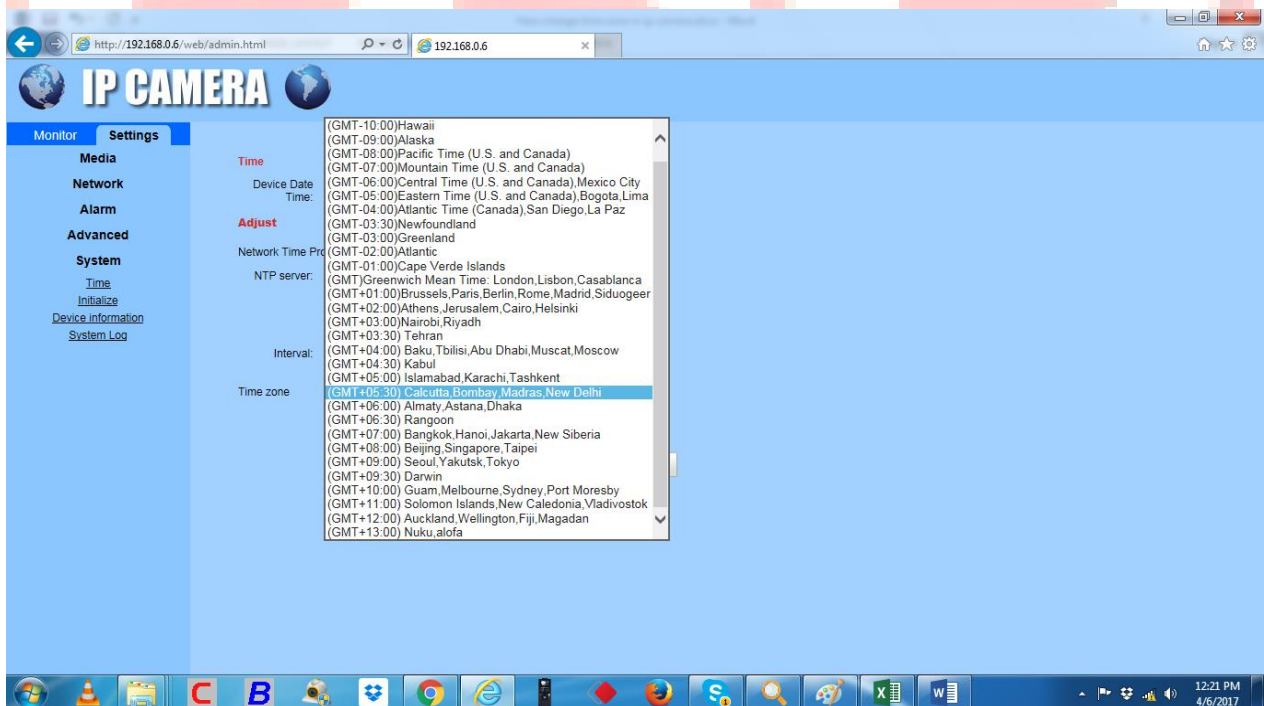
- Click on 'System' tab



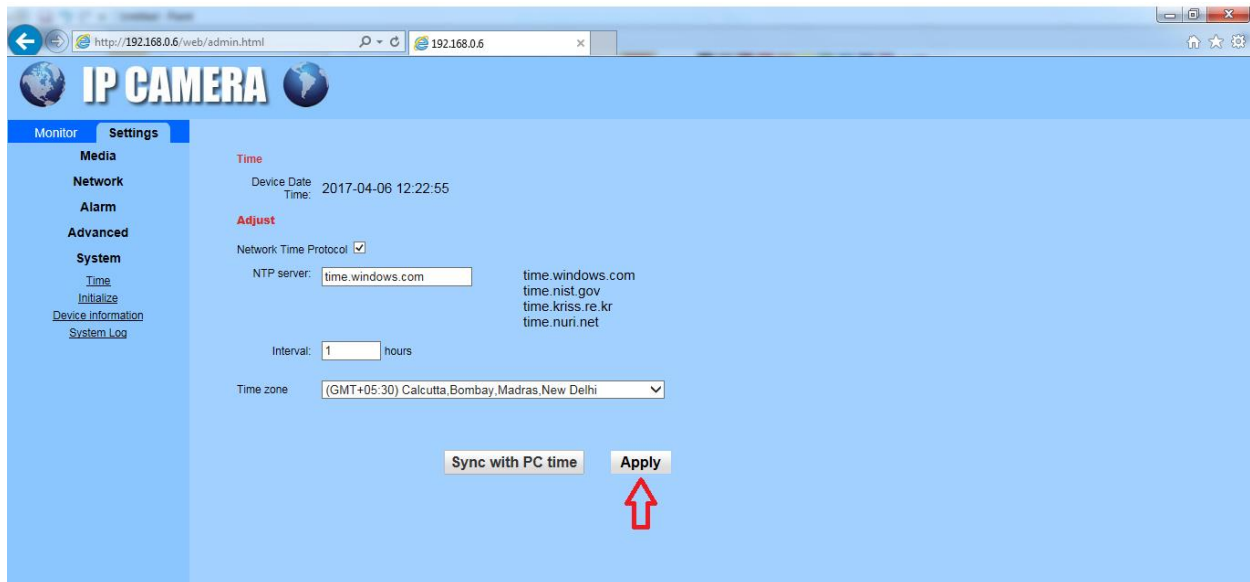
- Select 'Time' tab



- In time zone select (GMT+5:30Calcutta, Bombay, Madras, New Delhi)



- Click on 'Apply'



Now the selected time will be displayed in mobile application.

***Note- Every time the camera is restarted due to power failure etc., time zone settings need to be re-configured using the process above.**